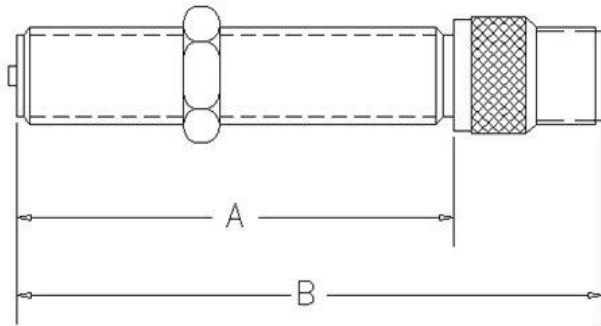


MAGNETIC PICKUP AND ACCESSORIES

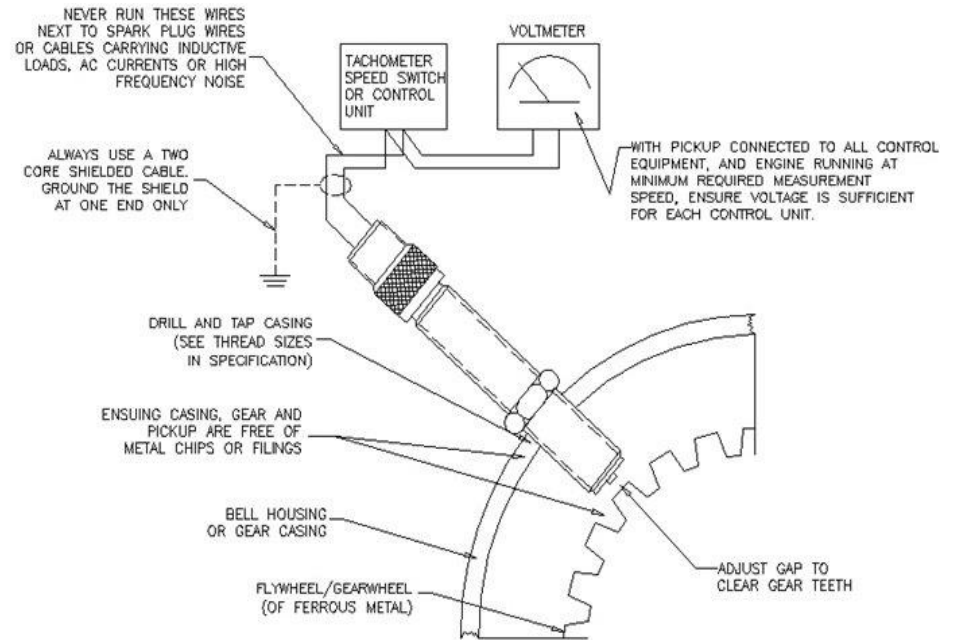
PART NUMBER	THREAD	SIZE DIM. A	SIZE DIM. B	CONNECTION	OHMIC VALUE	DRILL
DSC17200	3/8" - 24 UNF	2.25"	2.7"	72" Shielded 22 AWG	300 Ohm +/- 20%	0.332" or Q
DSC17400	3/8" - 24 UNF	4.0"	4.43"	72" Shielded 22 AWG	1000 Ohm +/- 20%	0.332" or Q
DSC8933	5/8" - 18 UNF	3.5"	4.0"	12" Non-Shielded 16 AWG	1200 Ohm +/- 20%	37/64"
DSC15400	5/8" - 18 UNF	2.875"	4.0"	Two Pin MS 3106 Connector	1200 Ohm +/- 20%	37/64"
R8931	3/4" - 16 UNF	3.75"	4.375"	9" Non-Shielded 16 AWG	275 Ohm +/- 3%	11/64"
R8930	3/4" - 16 UNF	2.0"	2.6"	9" Non-Shielded 16 AWG	275 Ohm +/- 3%	11/64"
DSC6732C	5/8" - 18 UNF	2.75"	3.125"	Dual 3" Packard Connector	200 Ohm +/- 25%	37/64"
DSC10200	5/8" - 18 UNF	4.0"	5.0"	Two Pin MS 3106 Connector	250 Ohm +/- 20%	37/64"

PART NUMBER	LENGTH	WIRE	DESCRIPTION	CONNECTOR	
DSC010	10'	18 AWG	Belden	Wiring Harness 2 Pin	MS3106 Straight
DSC010-15	15'	18 AWG	Belden	Wiring Harness 2 Pin	MS3106 Straight
DSC011	10'	18 AWG	Belden	Wiring Harness 2 Pin	MS3106 Right Angle
DSC011-15	15'	18 AWG	Belden	Wiring Harness 2 Pin	MS3106 Right Angle



839 Bill France Blvd, Daytona Beach, Florida 32117 USA
Phone: (386) 274-2079, (800) 383-2078
Fax: (386) 274-2279, (800) 475-2279
www.davidsonsales.com

REV 3.0 : 30-JUL-2021



TYPICAL INSTALLATION